

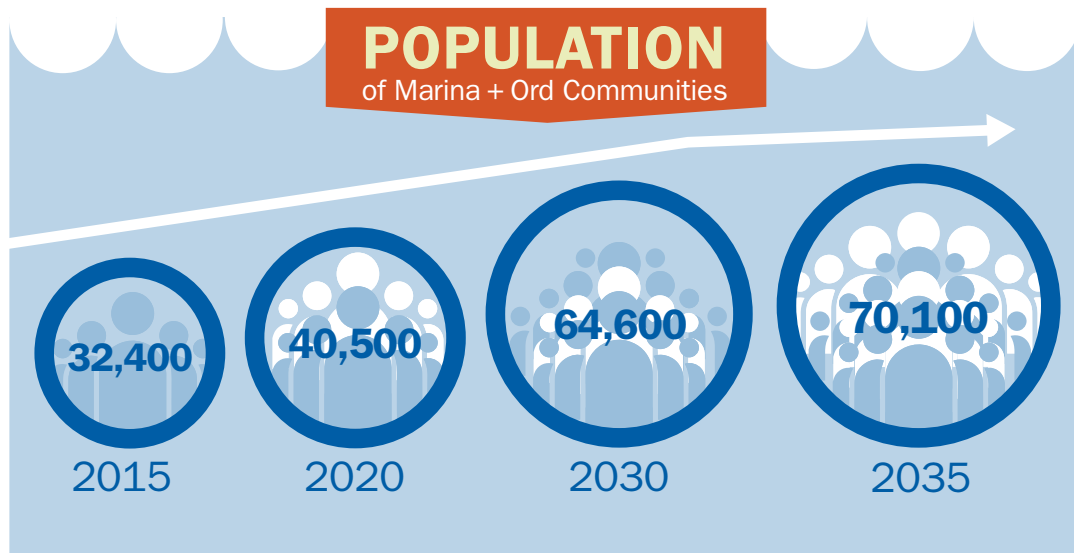


# URBAN WATER MANAGEMENT PLAN



## PLANNING FOR THE FUTURE

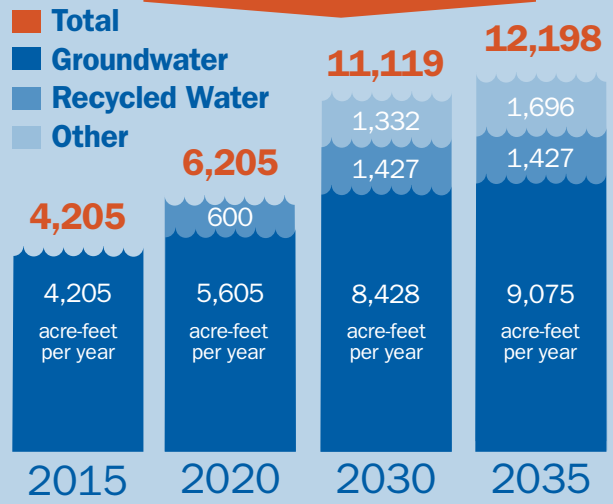
UWMP is updated every 5 years to ensure water supplies will meet demand.



With an adequate **SUPPLY** we can better serve our **POPULATION**

**POPULATION** is increasing which affects water **DEMAND**

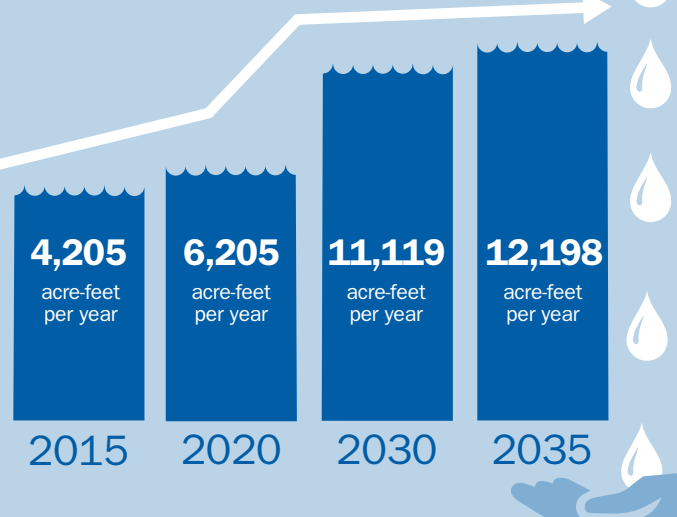
### SUPPLY



**NOTE:** MCWD currently draws water from the Salinas Valley Groundwater Basin and is actively planning for the future. The District has formed regional alliances to invest in infrastructure to deliver advanced treated recycled water for commercial irrigation, study possible future supplies and explore viable desalination projects.



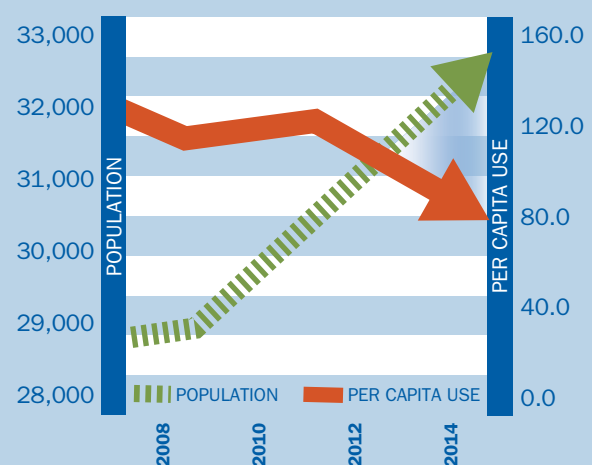
### PROJECTED DEMAND



### CONSERVATION

began long before current drought

**AS POPULATION INCREASES per-capita water use DECREASES**



**CONSERVATION** helps bolster our **SUPPLY**

**DEMAND** is increasing but our ratepayers are excellent at **CONSERVATION**